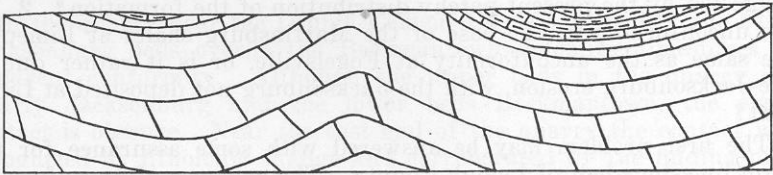
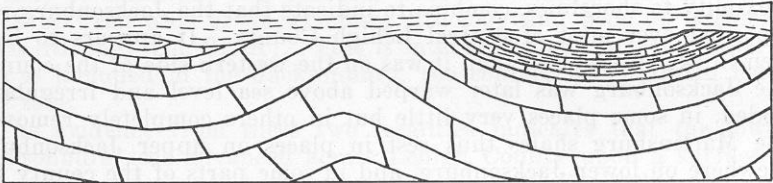


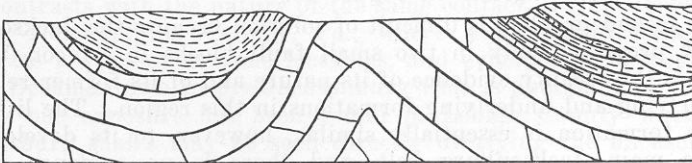
1



2



3



4

Figure 10. Series of diagrams illustrating the reason for the patchy distribution of the Jacksonburg limestones in Lehigh County.

The history of pre-Martinsburg Mohawkin time may be summarized as follows, in line with the interpretations advanced above. Following the deposition of the Beekmantown limestones, a long period covering all of Chazy and Black River time elapsed during which Lehigh County stood above sea level and received no deposits. The central and northwestern parts of the county were low lying and suffered no appreciable erosion, but southeastern parts of the county were probably eroded deeply. In lower Hull time the Jacksonburg seas advanced from the northeast, and deposited limestones which were at first relatively pure but later quite argillaceous. These Jacksonburg deposits probably formed a continuous mantle over the entire county, thicker however to the northeast than in southern and western sections. In Sherman Fall time the Jacksonburg seas retreated, the region was up-warped and irregularly eroded. In places all of the